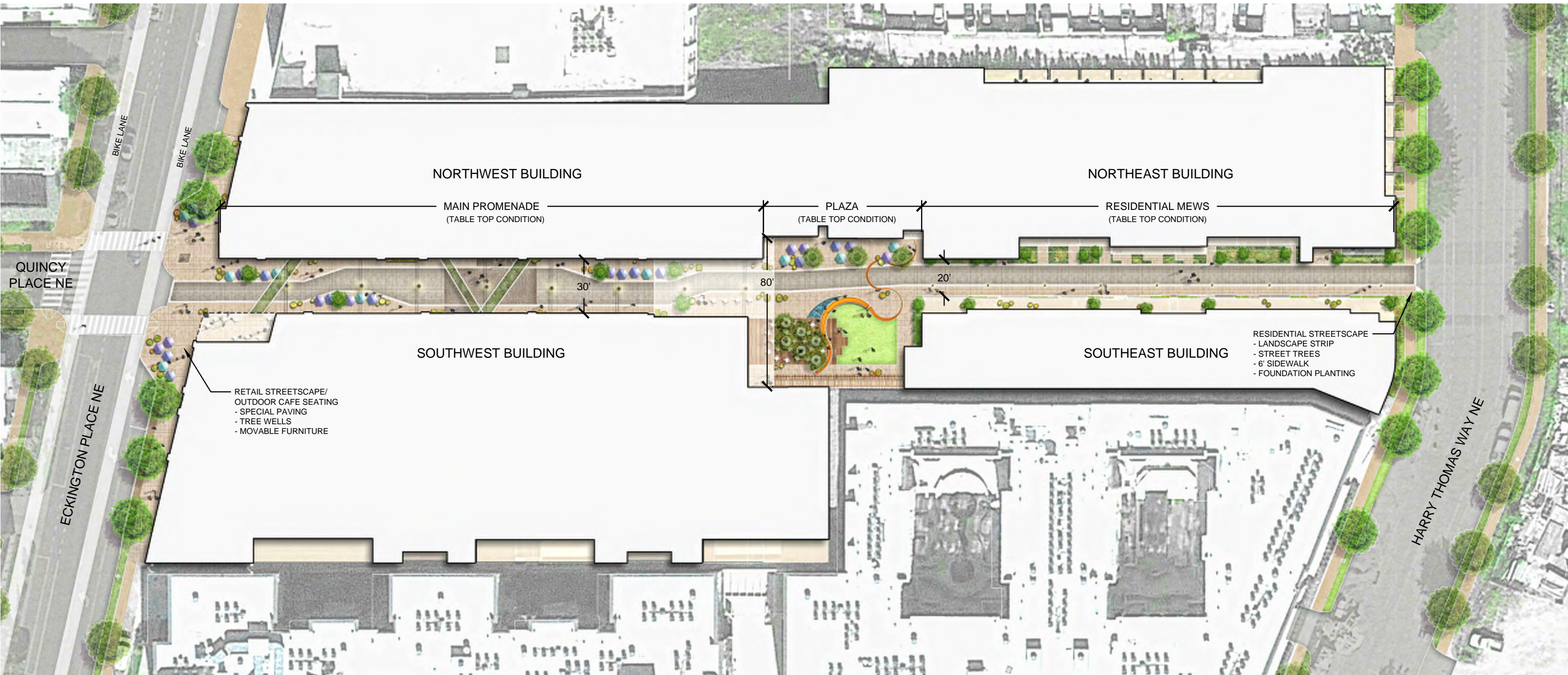


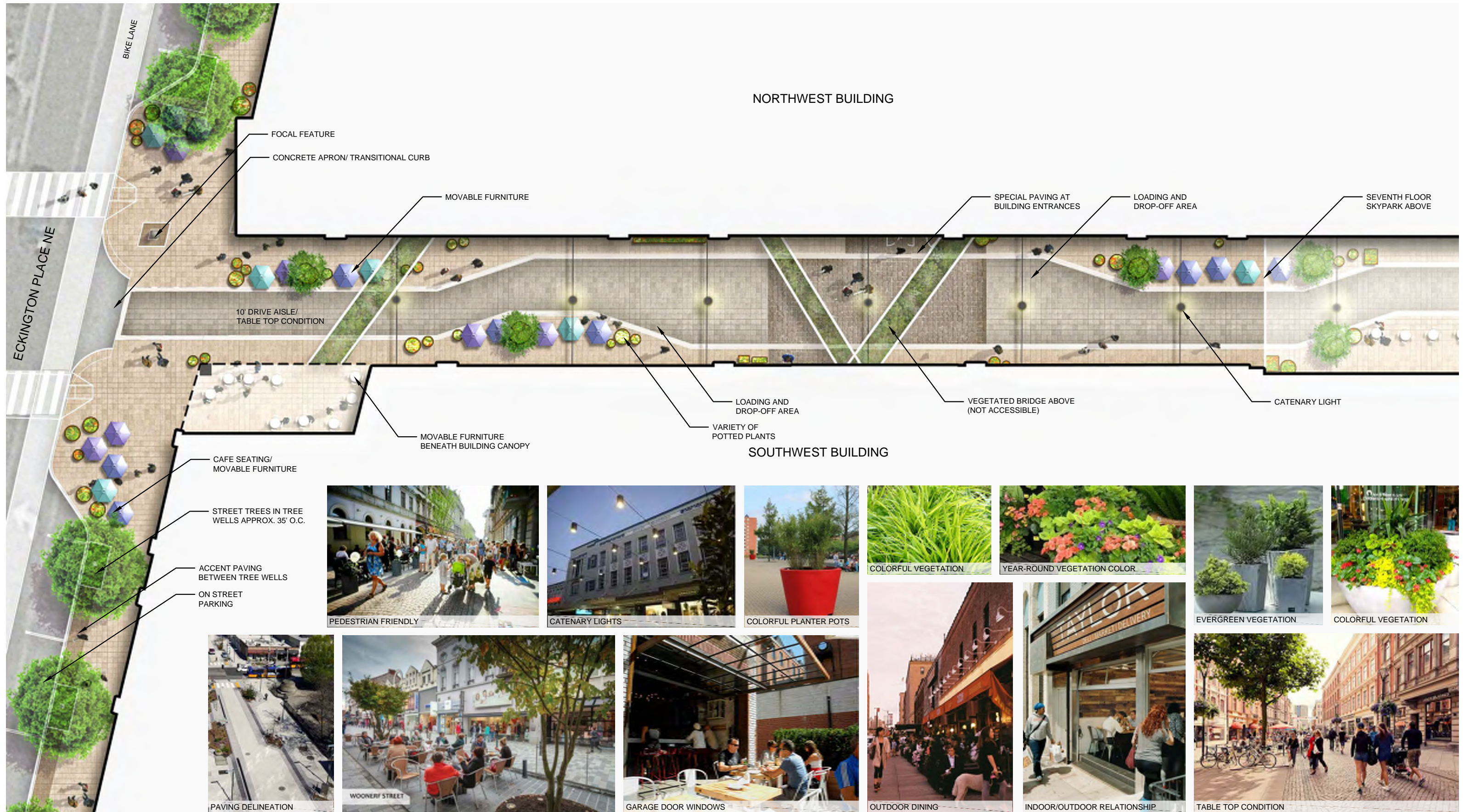
---

# L1 | LANDSCAPE STREET LEVEL PLANS

ZONING COMMISSION  
District of Columbia  
CASE NO.15-15  
EXHIBIT NO.1118







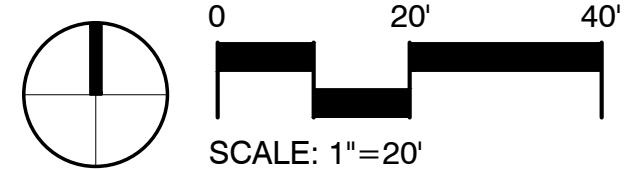
**MAIN PROMENADE ENLARGEMENT**

L1.02 | PRE-HEARING SUBMISSION  
02 / 16 / 2016

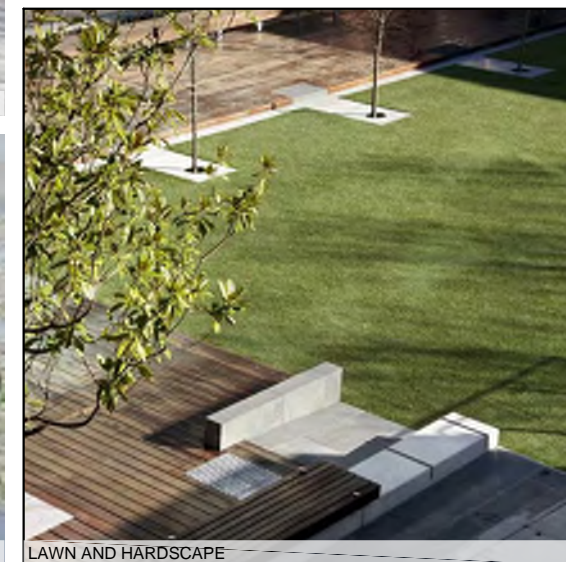
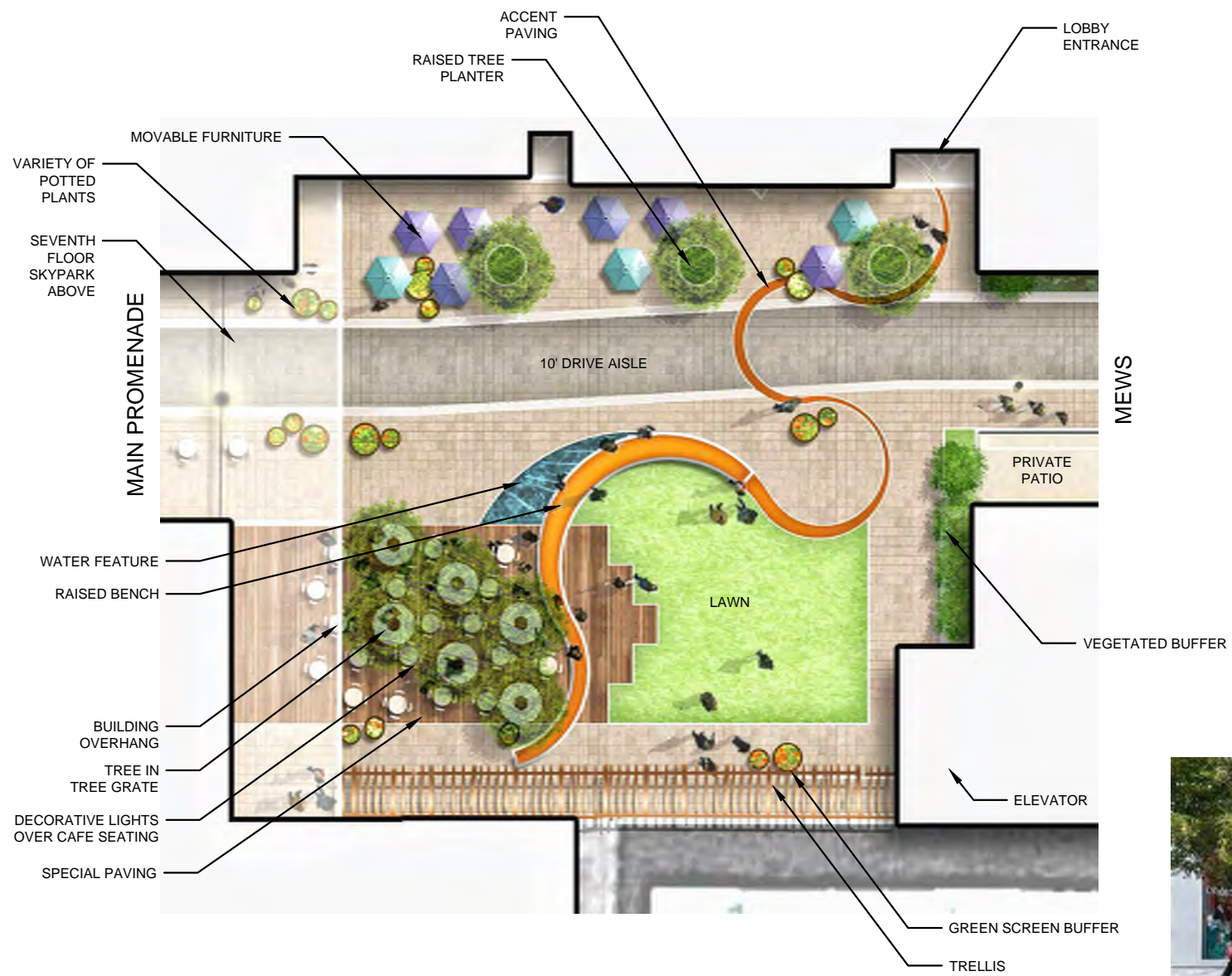
**ECKINGTON YARDS | EAST + WEST**  
1611-25 ECKINGTON PLACE + 1500 HARRY THOMAS WAY, NE WASHINGTON DC 20002

**BOUNDARY COMPANIES | J B G**  
4445 WILLARD AVENUE, SUITE 400 BETHESDA MD 20815

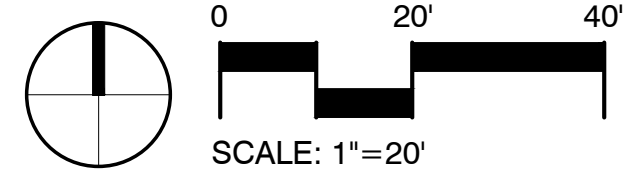
**LANDDESIGN, INC.**  
200 S. PEYTON STREET ALEXANDRIA, VA 22314











RESIDENTIAL MEW ENLARGEMENT

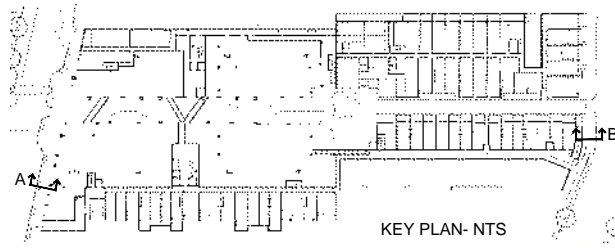
L1.04 | PRE-HEARING SUBMISSION  
02 / 16 / 2016

ECKINGTON YARDS | EAST + WEST  
1611-25 ECKINGTON PLACE + 1500 HARRY THOMAS WAY, NE WASHINGTON DC 20002

BOUNDARY COMPANIES | J B G  
4445 WILLARD AVENUE, SUITE 400 BETHESDA MD 20815

LANDDESIGN, INC.  
200 S. PEYTON STREET ALEXANDRIA, VA 22314





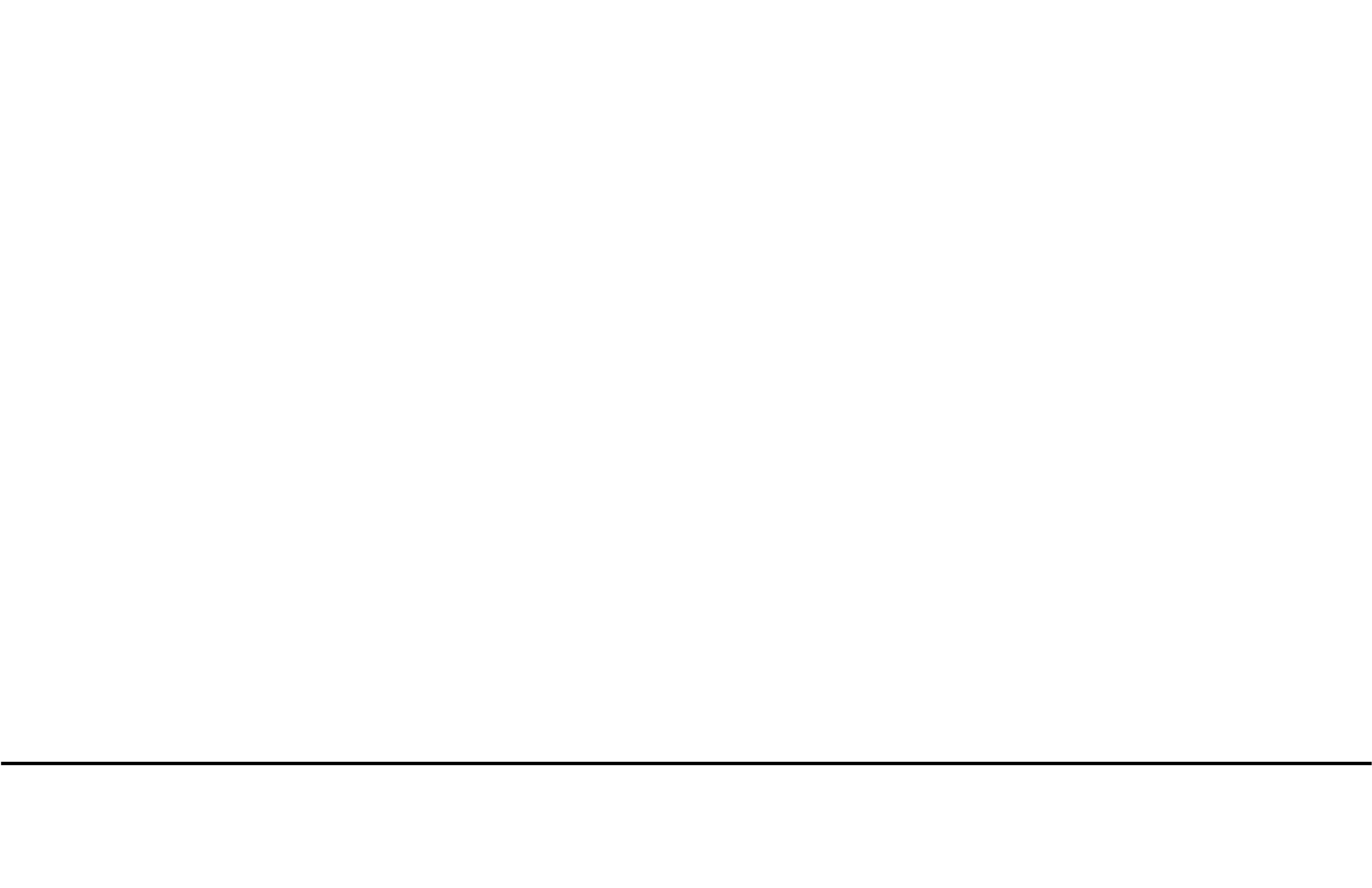
ECKINGTON PLACE NE - SECTION A



HARRY THOMAS WAY NE - SECTION B



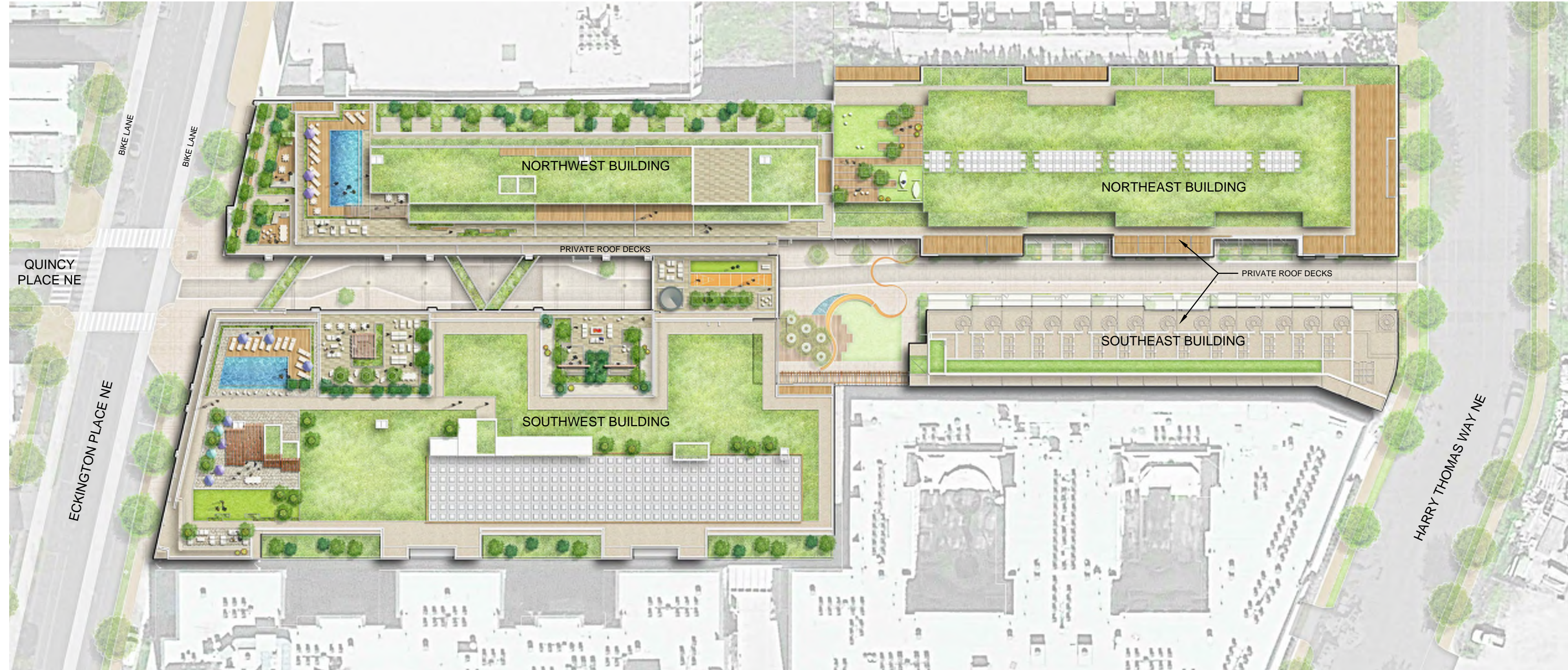
SCALE: 1"=5'



---

L2 | LANDSCAPE ROOF + COURTYARD PLANS



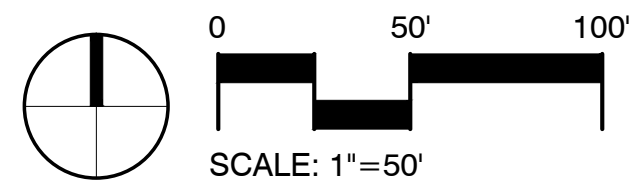


CONCEPTUAL ROOFTOP ENLARGEMENT

L2.01 | PRE-HEARING SUBMISSION  
02 / 16 / 2016

ECKINGTON YARDS | EAST + WEST  
1611-25 ECKINGTON PLACE + 1500 HARRY THOMAS WAY, NE WASHINGTON DC 20002

BOUNDARY COMPANIES | J B G  
4445 WILLARD AVENUE, SUITE 400 BETHESDA MD 20815



LANDDESIGN, INC.  
200 S. PEYTON STREET ALEXANDRIA, VA 22314

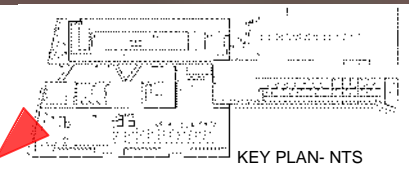




NORTHWEST  
BUILDING

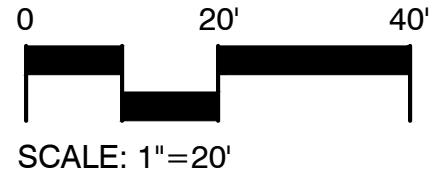
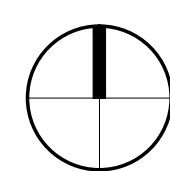
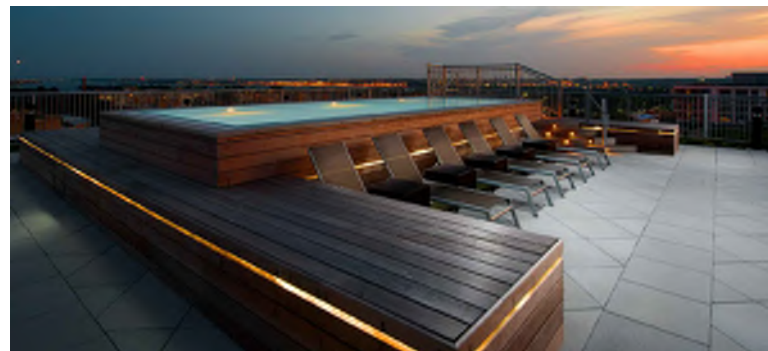
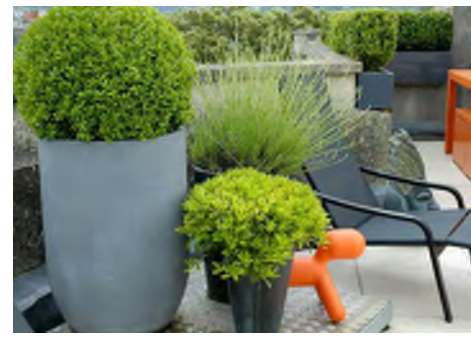
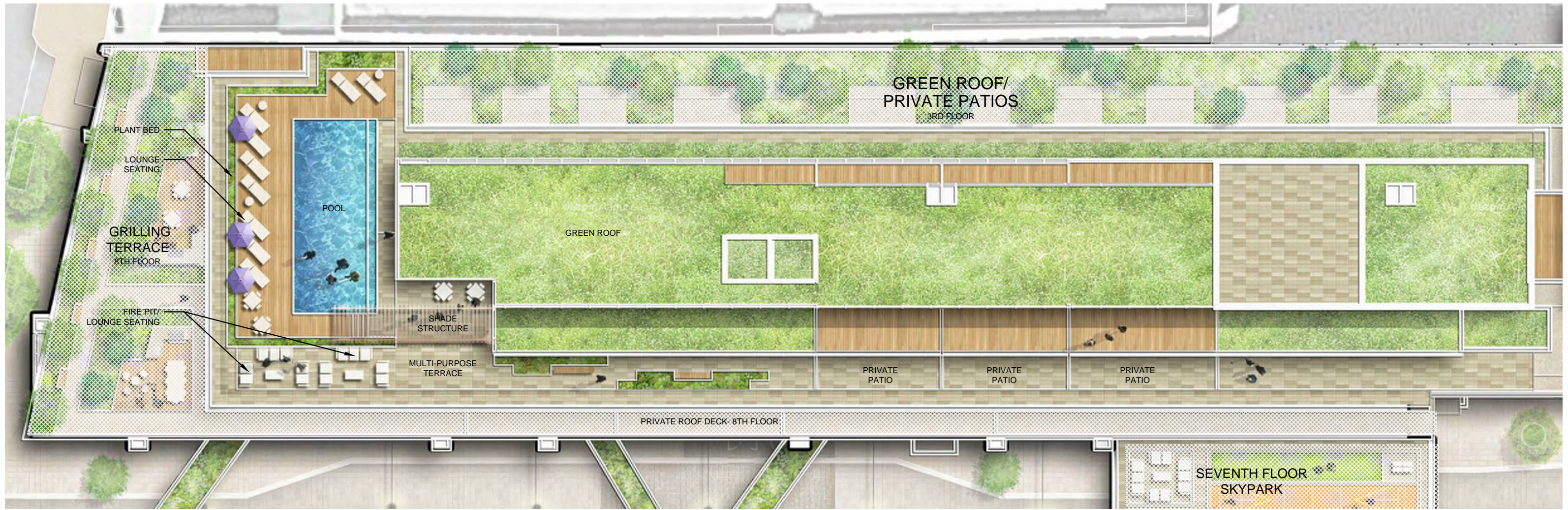
SOUTHWEST  
BUILDING

ECKINGTON PLACE NE



KEY PLAN- NTS





**NW POOL ROOFTOP ENLARGEMENT**

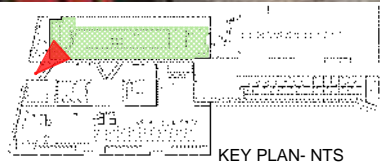
L2.03 | PRE-HEARING SUBMISSION  
02 / 16 / 2016

**ECKINGTON YARDS | EAST + WEST**  
1611-25 ECKINGTON PLACE + 1500 HARRY THOMAS WAY, NE WASHINGTON DC 20002

**BOUNDARY COMPANIES | J B G**  
4445 WILLARD AVENUE, SUITE 400 BETHESDA MD 20815

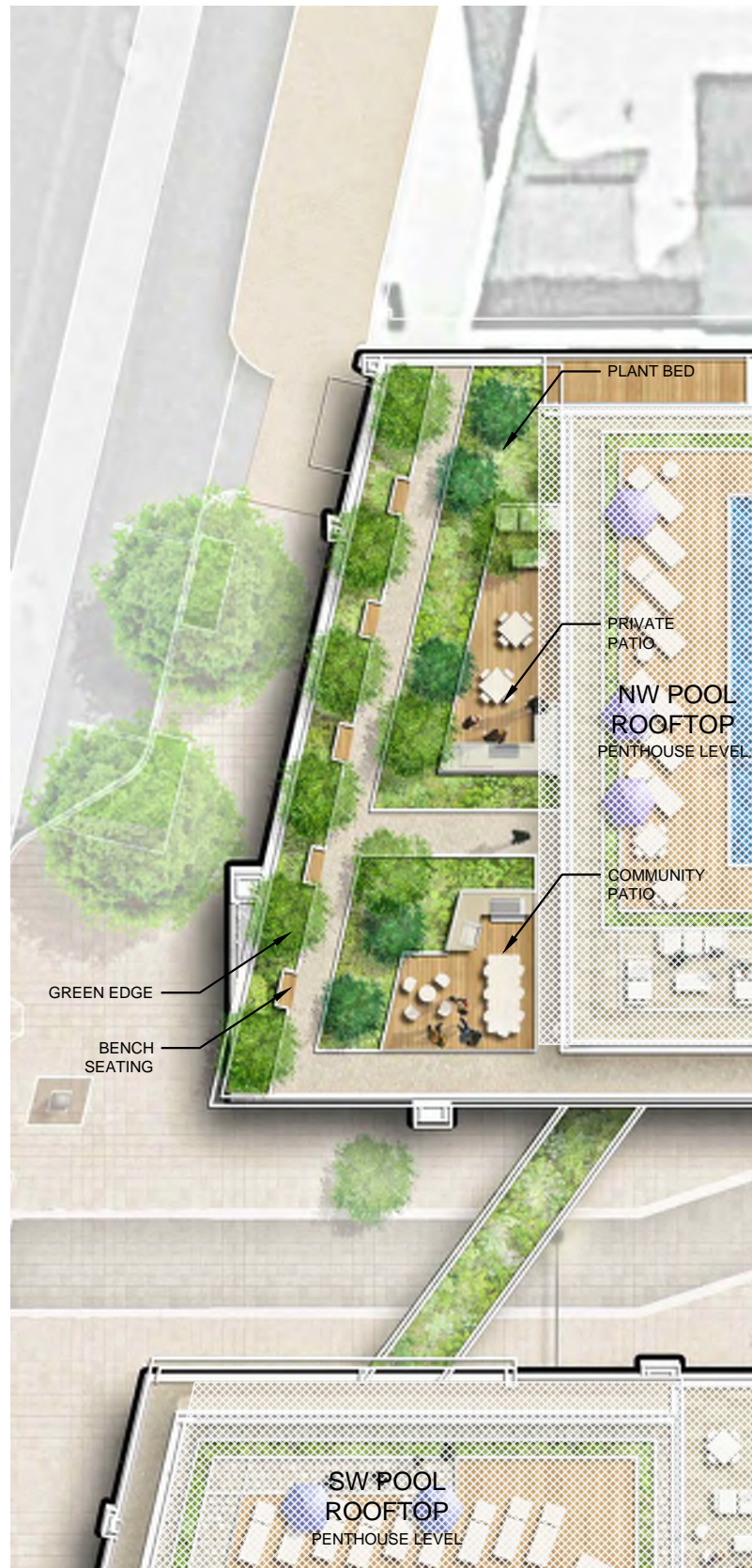
**LANDDESIGN, INC.**  
200 S. PEYTON STREET ALEXANDRIA, VA 22314





KEY PLAN- NTS





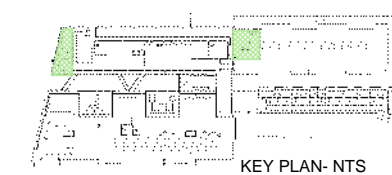
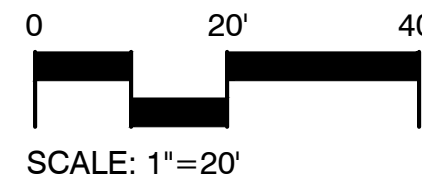
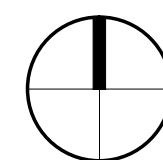
GRILLING TERRACE ENLARGEMENT



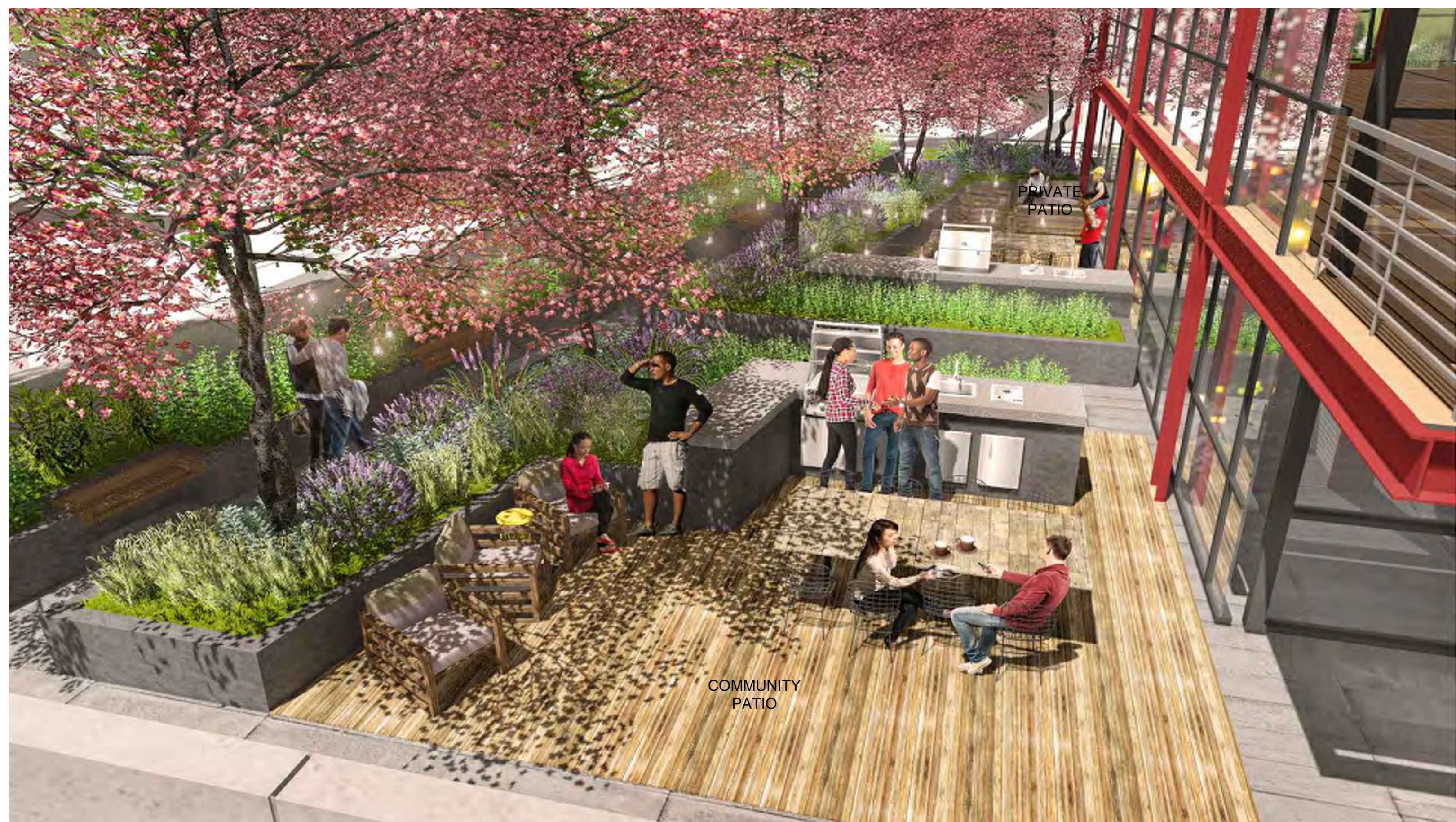
SUN DECK ENLARGEMENT



GRILLING TERRACE AND SUN DECK ENLARGEMENT

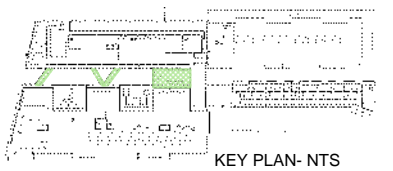
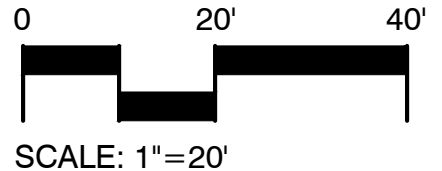
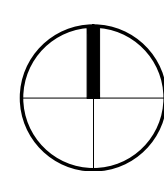
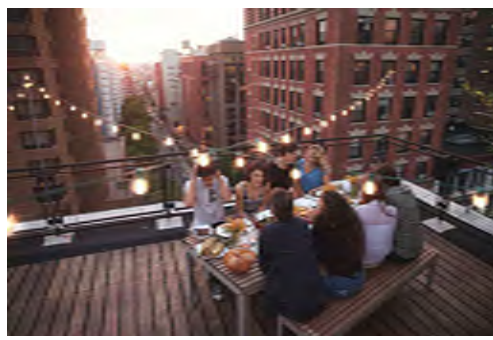
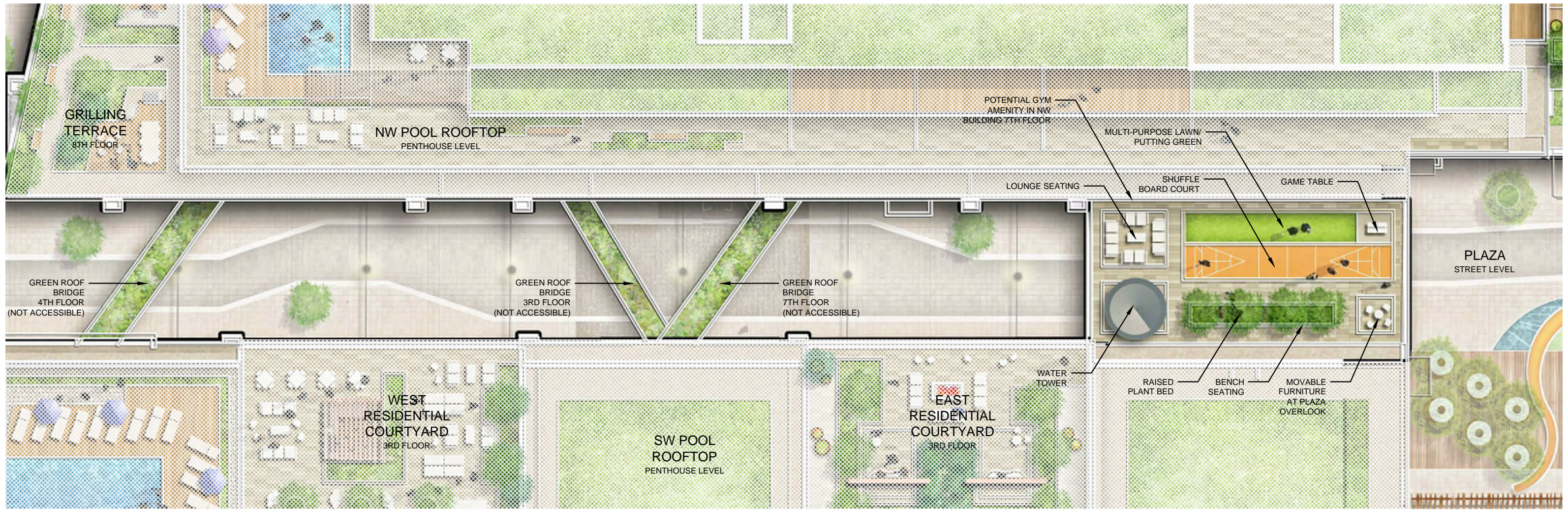






KEY PLAN- NTS





# SEVENTH FLOOR SKYPARK ENLARGEMENT

L2.07 | PRE-HEARING SUBMISSION  
02 / 16 / 2016

ECKINGTON YARDS | EAST + WEST  
1611-25 ECKINGTON PLACE + 1500 HARRY THOMAS WAY, NE WASHINGTON DC 20002

BOUNDARY COMPANIES | J B G  
4445 WILLARD AVENUE, SUITE 400 BETHESDA MD 20815

LANDDESIGN, INC.  
200 S. PEYTON STREET ALEXANDRIA, VA 22314





SEVENTH FLOOR SKYPARK LOOKING EAST

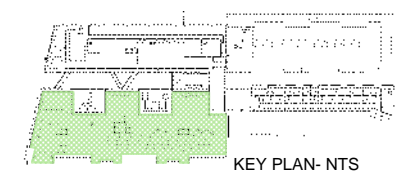
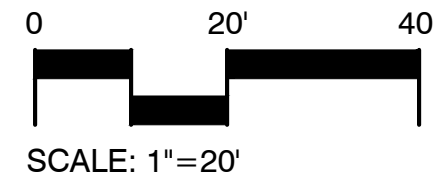
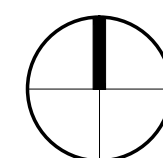
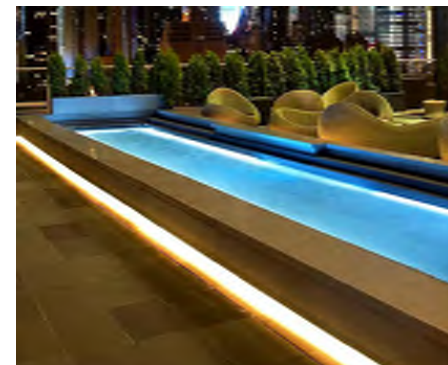
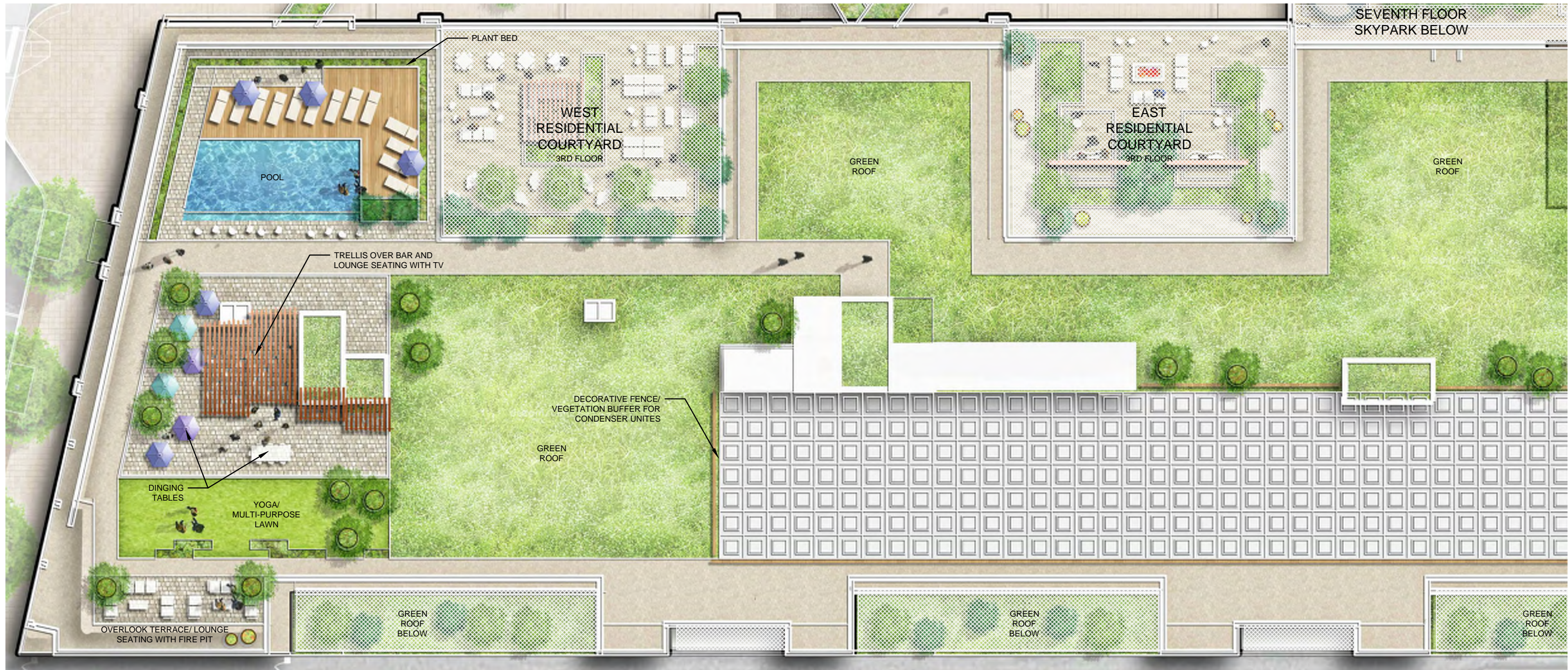


SEVENTH FLOOR SKYPARK LOOKING WEST



KEY PLAN- NTS





**SW POOL ROOFTOP ENLARGEMENT**

L2.09 | PRE-HEARING SUBMISSION  
02 / 16 / 2016

**ECKINGTON YARDS | EAST + WEST**  
1611-25 ECKINGTON PLACE + 1500 HARRY THOMAS WAY, NE WASHINGTON DC 20002

**BOUNDARY COMPANIES | J B G**  
4445 WILLARD AVENUE, SUITE 400 BETHESDA MD 20815

**LANDDESIGN, INC.**  
200 S. PEYTON STREET ALEXANDRIA, VA 22314





POOL W/ INFINITY EDGE



BAR AND LOUNGE SEATING W/ TV

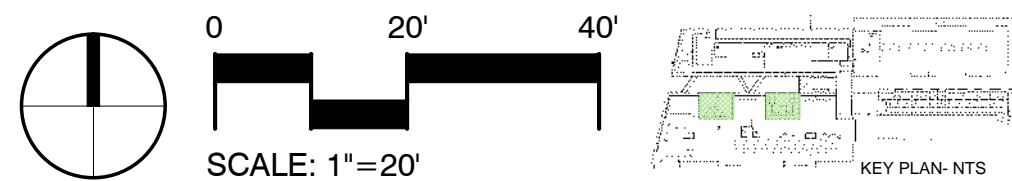
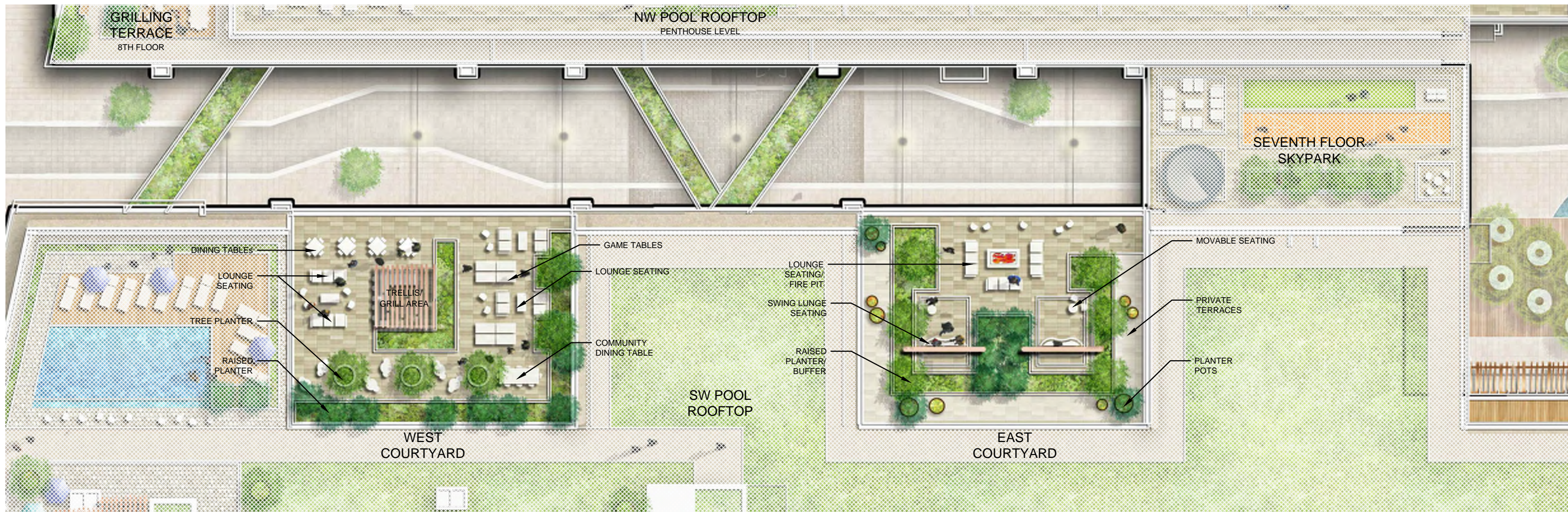


LOUNGE SEATING W/ FIRE PIT OVERLOOK



KEY PLAN- NTS





**RESIDENTIAL COURTYARD - SW BUILDING ENLARGEMENTS**

L2.11 | PRE-HEARING SUBMISSION  
02 / 16 / 2016

**ECKINGTON YARDS | EAST + WEST**  
1611-25 ECKINGTON PLACE + 1500 HARRY THOMAS WAY, NE WASHINGTON DC 20002

**BOUNDARY COMPANIES | J B G**  
4445 WILLARD AVENUE, SUITE 400 BETHESDA MD 20815

**LANDDESIGN, INC.**  
200 S. PEYTON STREET ALEXANDRIA, VA 22314

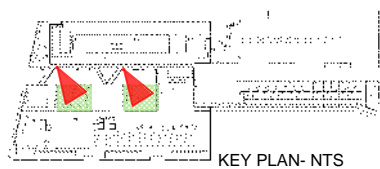




WEST COURTYARD | ACTIVE



EAST COURTYARD | PASSIVE



KEY PLAN- NTS



